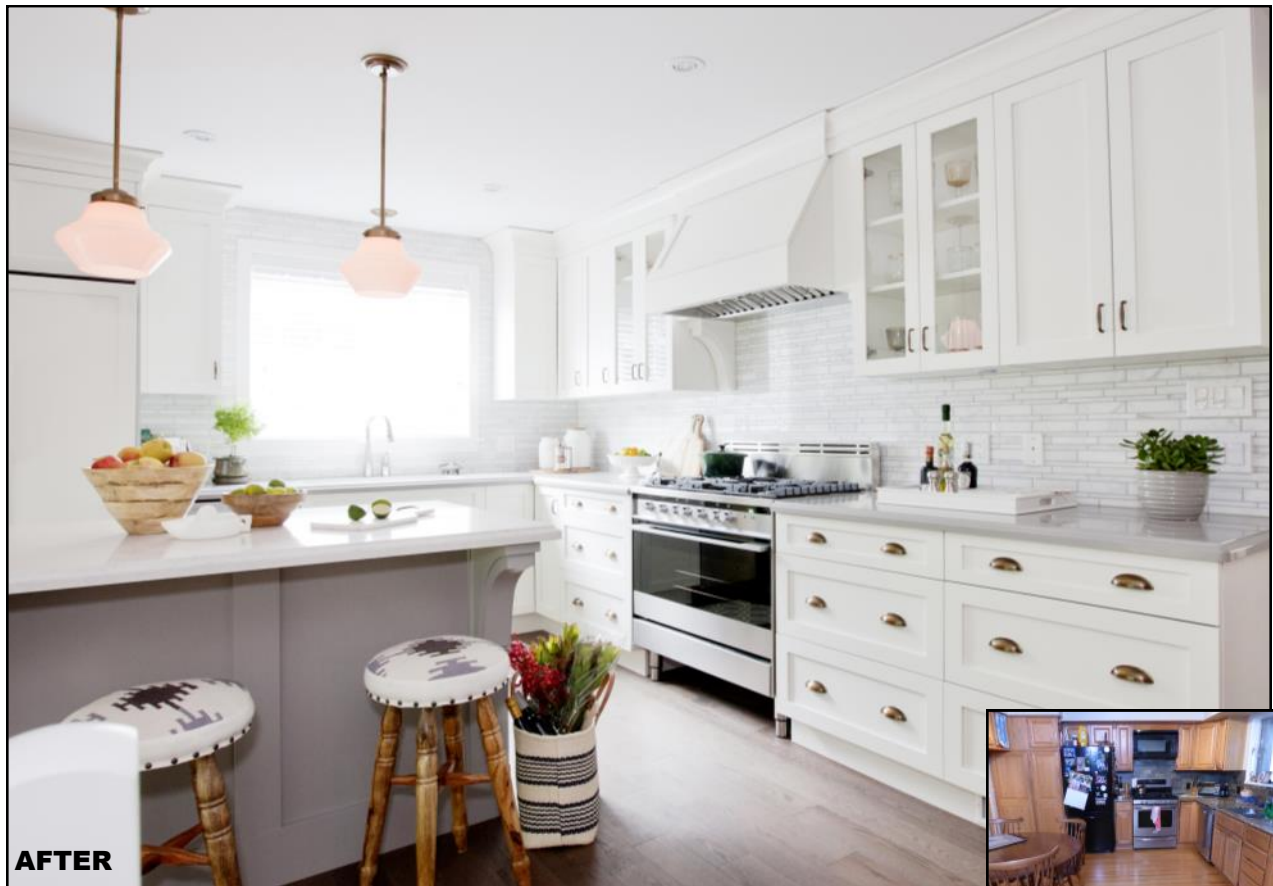


LOVE IT « OR » LIST IT

VANCOUVER

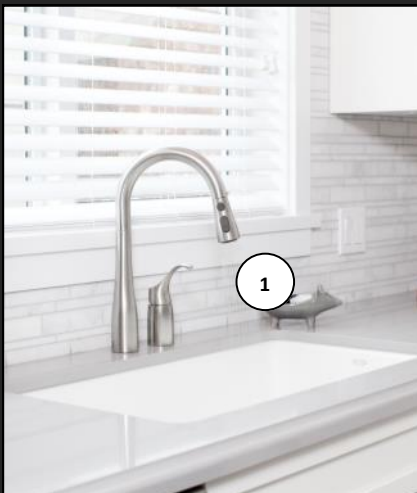
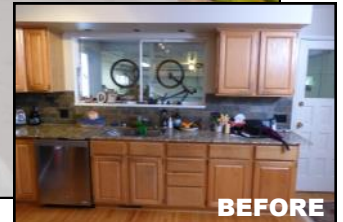
Meg & Neal

Soon-to-be empty-nesters Meg and Neal disagree on what to do with their large, aging home. Meg can't stand the weird split-level layout, the bizarre kitchen window that peers into the garage, and her 80's-inspired master bedroom. She's desperate for Todd to show her something smaller, and turnkey. Neal loves the home's quirks and also its memories, and hopes Jillian can show Meg the potential.



LOVE IT « OR » LIST IT

VANCOUVER



1 KOHLER
See Details on Page 7

2 MERIT KITCHENS
See Details on Page 6

3 DESIGN LIGHTING
See Details on Page 8

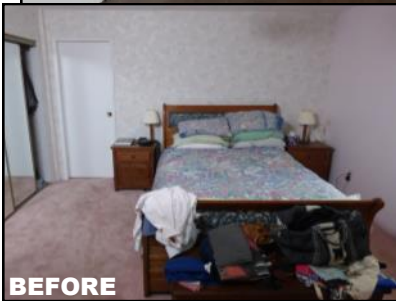
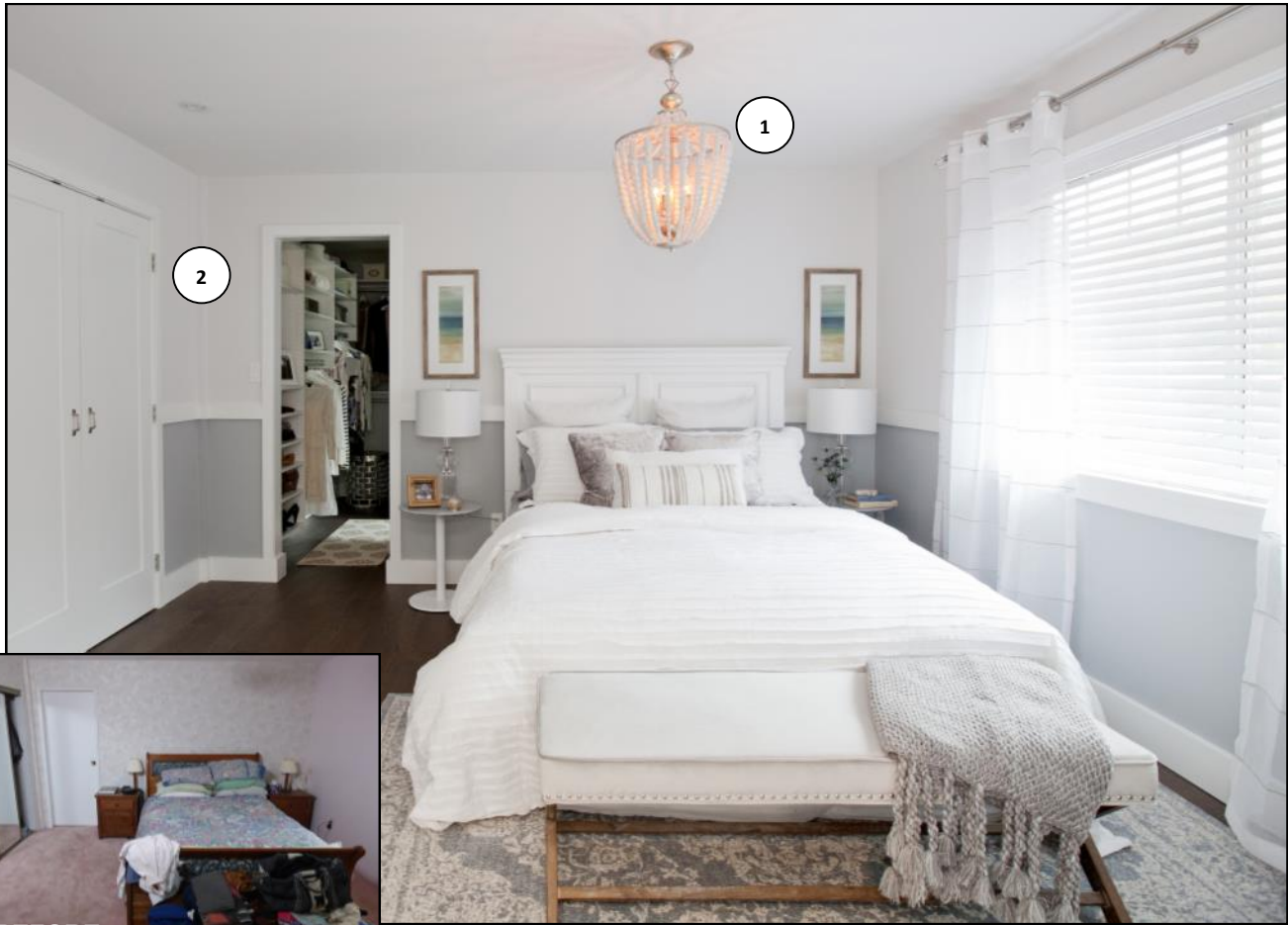
4 SCHAUB
Bronze Cabinet Pulls

5 COAST WHOLESALE APPLIANCES
See Details on Page 6

6 SILESTONE
See Details on Page 6

LOVE IT « OR » LIST IT

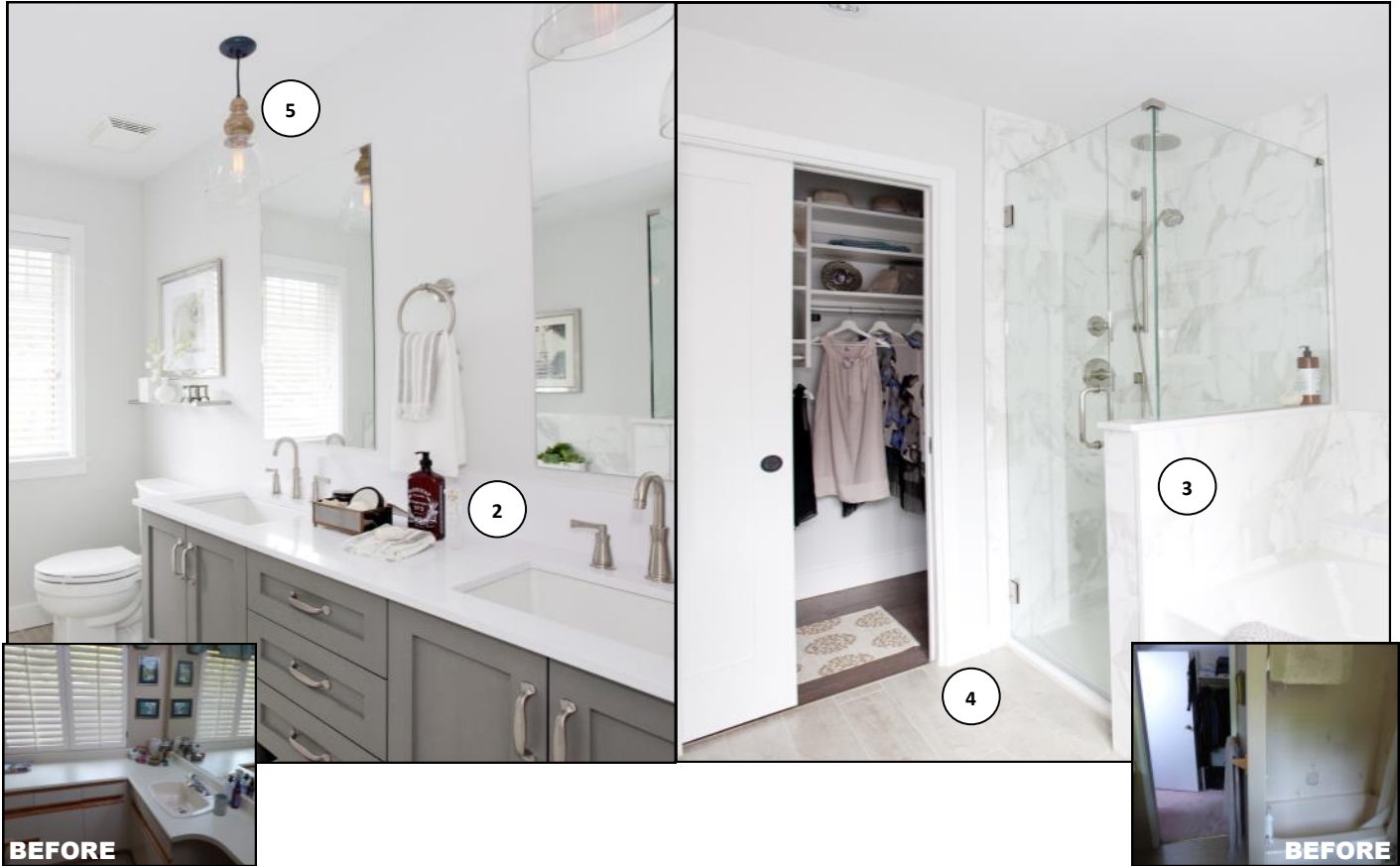
VANCOUVER



- 1 DESIGN LIGHTING
5 Light Wooden Chandelier with White Washed Wood and Palladium Gold Trim
- 2 CLOVERDALE PAINT
See Details on Page 9
- 3 STOR-X
Cabinets in "frosty white" Finish

LOVE IT « OR » LIST IT

VANCOUVER



- 1 **MERIT KITCHENS**
Vanity with Prairie School Doors, and 'Maple Melamine' Soft Close Drawers, Finished in 'Opaque Graphite'
- 2 **KOHLER**
See Details on Page 7
- 3 **SILESTONE**
Silestone Countertop, Backsplash and Tub Surround Finished with White Storm
- 4 **OLYMPIA TILE**
See Details on Page 6
- 5 **DESIGN LIGHTING**
Matrimonio 1 Light Pendant with Clear Finish

LOVE IT « OR » LIST IT


VANCOUVER



- 1 WEISER**
Aspen Door Handle in Venetian Bronze
- 2 CLOVERDALE PAINT**
'Pewter Moon' Ecologic Washable Flat Interior
- 3 MERCIER**
Engineered Red Oak, Heritage 'Americano' Stain with a Matte Finish
- 4 WHOLESALE BLIND FACTORY**
2" Faux Wood Blinds in White




RESOURCE GUIDE

MEG & NEAL

	COMPANY	WEBSITE	WHAT WE USED AND WHERE
	MERIT KITCHENS	www.merit-kitchens.com	<p>Kitchen Kitchen Perimeter Cabinets with Manor Doors and Soft Close Drawers, Finished in 'Powder' Colour Kitchen Island Cabinets with Manor Doors and 'Maple Melamine' Soft Close Drawers, Finished in 'Smoke' Colour</p> <p>Bathroom Vanity with Prairie School Doors, and 'Maple Melamine' Soft Close Drawers, Finished in 'Opaque Graphite'</p>
	SILESTONE	ca.silestone.com/en/	<p>Kitchen Silestone Countertop in Kensho Silestone Island in Lagoon</p> <p>Bathroom Silestone Countertop, Backsplash and Tub Surround in White Storm Finish</p>
	OLYMPIA TILE	www.olympiatile.com	<p>Kitchen Marble Oriental White Linear Pattern</p> <p>Bathroom Shower Surround Finished with Inspire 10"x30" Bianc Calacatta Flooring in Decostone White</p> <p>Fireplace Marble Verona Blend 2" Hexagon Tiles on the Front, with Calacatta Vintage 3" x 12" Over the Mantle</p>
	COAST WHOLESALE APPLIANCES	www.coastappliances.com	<p>Kitchen KitchenAid Bottom Mount Refrigerator 36" Six Burner Range 1.6 CU FT Panasonic Prestige Genius Microwave Okanagan CPM1 Series Hood Vent with 600 CFM</p>


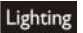


RESOURCE GUIDE

MEG & NEAL

	COMPANY	WEBSITE	WHAT WE USED AND WHERE
	KOHLER	www.kohler.ca	<p>Kitchen Iron Tones Top Mount/Undermount Kitchen Sink K-6625 Simplice Kitchen Faucet K-649-VS Duostrainer K-8801-VS</p> <p>Ensuite Archer Lav Faucet K-11076-4-BN Archer Towel ring K-11057-BN Archer Mirrored Cabinet K-3073 Archer Robe Hook K-1055-BN Archer Toilet Tissue Holder k-11054-BN Archer Comfort Height Toilet K-3551-0 Contemporary Round Rain shower head K-45201-BN 6 Inch Shower Arm K-7394-BN Stillness Hand Held Shower K-973-BN Stillness Wall Mount Bracket K-975-BN Wall Mount Supply Elbow with Check Valve K-98351-BN 30 Inch Slide Bar K-8524-BN Stillness Slide Bar Trim K-974-BN Verticyl Rectangle Sink K-T45849-4 Archer Deck Mount Bath Faucet K-T45849-4 1/2 Inch Ceramic High Flow Valve K-300-KR</p>
	MERCIER	www.mercier-wood-flooring.com	<p>Throughout Engineered Red Oak 4 1/2" Plank, Heritage 'Americano' Stain with a Matte Finish</p>
	SOLACE HOME COMFORT	www.solacehomecomfort.com	<p>Fireplace Napoleon Ascent X-GX36</p>


RESOURCE GUIDE

MEG & NEAL

	COMPANY	WEBSITE	WHAT WE USED AND WHERE
	STOR-X	www.stor-x.com	Master Bedroom Closet Cabinets in “frosty white” Finish
Design 	DESIGN LIGHTING	www.designlighting.ca	<p>Master Bedroom 5 Light Wooden Chandelier with White Washed Wood and Palladium Gold Trim LAU-175C-PG</p> <p>Kitchen Alcott 1 Light Pendant with Clear Seeded Finish P1399AGB Alcott 1 Light Pendant with White Opal Shiny Finish P1404AGB</p> <p>Bathroom Matrimonio 1 Light Pendent with Clear Finish P1395DFW/DW</p> <p>Dining Room Fulton 4 Light Chandelier with Bronze Finish 3334BZ</p> <p>Foyer Hampton 1 Light with Off White Linen Hardback 3200BR</p>
	WEISER	www.weiserlock.com	<p>Bedroom Aspen Door Handle in Venetian Bronze 33111P</p> <p>Garage Aspen Door Handle in Venetian Bronze 53511P</p> <p>Ensuite Pocket Door: WR1031 11P B SL</p>
	WHOLESALE BLIND FACTORY	www.wholesaleblindfactory.com	Throughout 2” Faux Wood Blinds in White



RESOURCE GUIDE

MEG & NEAL

	COMPANY	WEBSITE	WHAT WE USED AND WHERE
	CLOVERDALE PAINT	www.cloverdalepaint.com	<p>Throughout Ceilings are 'Standard White' Flat Interior Surrounding Trim is 'Standard White' Renaissance Interior</p> <p>Main Floor 'Pewter Moon' Ecologic Washable Flat Interior</p> <p>Reading Nook Feature Wall is 'Hi Ho Silver' Ecologic Washable Flat Interior Main Walls are 'White Tail' Ecologic Washable Flat Interior</p> <p>Dining Room Feature Wall in 'White Delight' Ecologic Washable Flat Interior</p> <p>Master Bedroom 'Snowflake Confetti' Ecologic Washable Flat Interior (Above Chair Rail) 'Zephyr' Ecologic Washable Flat Interior (Below Chair Rail)</p>
	SCHAUB	www.schaubandcompany.com	<p>Kitchen Bronze Cabinet Pulls: 721-AB Bronze Cup Pulls: 730-AB</p> <p>Bathroom Pulls: 742-15</p>
	NUHEAT	www.nuheat.com	<p>Ensuite In Floor Heating</p>
	EPOCH ENVIRONMENTAL CONSULTING	www.epochenvironmental.ca	<p>Asbestos Testing</p>

RESOURCE GUIDE

MEG & NEAL

	COMPANY	WEBSITE	WHAT WE USED AND WHERE
	VALLEY COUNTER-TOPS	www.valleycountertops.com	Template and Installation of all Countertops
	RAMBOARD	www.ramboard.com	Temporary Floor Protection during Construction